

Descriptive Settings: Beaches, Sea and Waves

What Can I Describe?

cliffs
coast
crest
current
docks
driftwood
fishermen
horizon
marina
marine life
rock pools
sailors
sandbar
sand
seabed
seabirds
shells
shoreline
tide
vessels
water

How Can I Describe It?

boundless
calm
choppy
crashing
endless
glassy
golden
heavy
isolated
mighty
pebbly
remote
rocky
secluded
shallow
tidal
tropical
turbulent
uncharted
undulating
vast

What Can It Do?

anchor
break
crash
curve
drift
flourish
flow
haul
overlook
plunge
rage
ride
rise
roll
sail
slope
stretch
stroll
surge
sweep
wash

Examples of Effective Phrases

...sunlight glinted from the wave's crest...

...glistening on the horizon...

Stormy, tumultuous waters raged...

...miniscule grains of golden sand...

Tropical waters stretched as far as the eye could see...

...boats floating atop the glassy water...



Descriptive Settings: Busy Cities

What Can I Describe?

advertisements
air quality
atmosphere
buildings
cityscape
crossings
districts
lights
noise
offices
performers
population
public transport
roads
safety
shops
smells
streets
traffic
underground
vendors

How Can I Describe It?

bustling
busy
communal
compact
congested
cosmopolitan
dense
historic
industrial
metropolitan
modern
noisy
notable
crowded
populated
profitable
prosperous
thriving
urban
vast
vibrant

What Can It Do?

attend
commute
cross
dazzle
direct
drive
illuminate
inhabit
live
migrate
park
reside
ride
sell
shop
sightsee
travel
visit
walk
watch
work

Examples of Effective Phrases

...dazzled by the illuminated billboards...

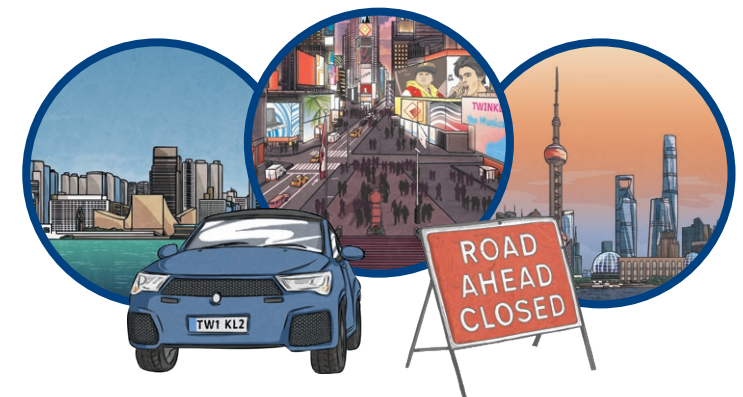
Smog clouded the crowded streets...

...captivated by the amazing street performers...

Below ground lay an extensive labyrinth of tunnels...

...reliable transport links...

...profitable shops in lucrative locations...



Descriptive Settings: Countryside and Villages

What Can I Describe?

amenities
farms
fields
foliage
gardens
hedgerows
history
houses
land
landscape
occupations
pastures
places of worship
residents
rurality
scenery
shops
town
village
wildlife
woodland

How Can I Describe It?

charming
delightful
flourishing
idyllic
isolated
local
luscious
open
peaceful
picturesque
pleasant
quaint
quiet
remote
rural
sleepy
small
thriving
unspoiled
wild
wooded

What Can It Do?

comb
cultivate
dominate
explore
farm
graze
live
nestle
observe
pass
plough
relax
reside
roam
roll
scour
surround
tour
travel
visit
wander

Examples of Effective Phrases

...picturesque rolling hills...

Isolated amongst vibrant fields of flourishing crops...

...quaint, medieval cottages...

...hedgerows alive with the chirping of cherished friends...

...the historic parish church...

In the sleepy, unspoiled village of Hucklesby...



Descriptive Settings: Hallways, Corridors and Stairs

What Can I Describe?	How Can I Describe It?	What Can It Do?	Examples of Effective Phrases
access routes architecture ceiling height company creaking decor doorways echoes exits flooring length lighting props purpose quantity of steps route secret passageways steps wall coverings windows	adjacent to... broad covered dingy draughty empty endless gloomy magnificent narrow panelled rickety shadowy slippery steep sterile subterranean underground vaulted windowless	ascend bolt climb creep dash descend echo enter fall follow glance hasten proceed race rush sprint stride traverse trot wind	<p>I entered the vast, lifeless expanse...</p> <p>...connecting the atrium to the dining quarters...</p> <p>...steep and perilous spiral staircase...</p> <p>...echoes reverberating from the panelled walls...</p> <p>The vestibule door closed with a haunting creak...</p> <p>Lurking within the narrow passageways...</p>



Descriptive Settings: Mountains and Volcanoes

What Can I Describe?

altitude
ash
caldera
cliffs
craggs
craters
eruptions
foothills
highlands
hillside
lava
magma
peaks
pumice
ridges
rocks
slopes
tremors
undulations
vents
weather

How Can I Describe It?

active
alpine
ancient
angry
conical
craggy
distant
enormous
extinct
fiery
graded
great
hilly
impassable
mighty
monstrous
mountainous
sheer
snow-capped
steep
towering

What Can It Do?

adventure
ascend
conquer
descend
destroy
dwell
eject
erupt
evacuate
explode
explore
hike
loom
overlook
pass
rise
roll
scramble
ski
slumber
tower

Examples of Effective Phrases

...towered majestically...

...dominates the landscape...

...hurled scorching rock and ash into the air...

Guttural rumbling could be heard...

...impenetrable to explorers...

The mighty overseer surveyed its territory...



Descriptive Settings: Rainforests and Jungles

What Can I Describe?

biodiversity
canopies
deforestation
ecosystems
fauna
flora
fruits
ground
habitats
insects
layers
plants
predators
species
swamps
temperature
thickets
vines
weather
wildlife

How Can I Describe It?

chaotic
dense
endless
exotic
hazardous
hostile
humid
impassable
impenetrable
lush
luxuriant
mysterious
remote
steamy
swampy
tangled
tough
trackless
unexplored
uninhabited

What Can It Do?

crawl
creep
disappear
emerge
escape
hide
infest
inhabit
live
lurk
melt
plunge
retreat
roam
search
survive
teem
trek
venture
wander

Examples of Effective Phrases

...lurking within the dense foliage...

Among gnarled and twisted vines...

...abundant and luscious flora...

...through the impenetrable and sinister swamp...

...previously unexplored territory...

Stifling heat made the exotic paradise extremely hazardous.



Descriptive Settings: Rivers, Lakes, Streams and Waterfalls

What Can I Describe?

basin
brook
cascade
creek
dam
drop
estuary
fish
flow
fountain
glaciers
lake
mud
rapids
riverbank
riverbed
riverside
shoreline
stream
valley
waterway

How Can I Describe It?

dramatic
eutrophic
famous
glacial
icy
impressive
magnificent
majestic
marshy
mighty
narrow
navigable
noisy
picturesque
polluted
sacred
shallow
sluggish
spectacular
turbulent
wide

What Can It Do?

border
cascade
cross
divert
drain
flow
foam
head
lead
plunge
pour
rise
roar
rush
sail
stretch
surround
swim
trickle
tumble
wash

Examples of Effective Phrases

...turbulent waters swirled...

...lulled and lapped the tranquil riverbed...

A thundering cascade...

Famous for its eutrophic conditions...

The gentle current sloshed against the marshes...

Infamously unnavigable...



Descriptive Settings: Castles

What Can I Describe?

armour
 arrow slits
 banquet
 battlements
 beams
 candlelight
 carpets
 chambers
 corridor
 doors
 drawbridge
 fireplace
 furniture
 great hall
 grounds
 moat
 paintings
 portcullis
 spiral staircase
 tapestries
 turrets
 walls
 windows

How Can I Describe It?

aged
 ancient
 cavernous
 citadel
 coil
 decadent
 decrepit
 dizzying
 exquisite
 flickering
 fortress
 gleaming
 hushed
 imposing
 lookout
 luxurious
 noble
 plush
 polished
 rich
 stately
 whistling

What Can It Do?

adorn
 alert
 brighten
 creaked
 defend
 drench
 fall
 illuminate
 jut
 perplex
 protect
 protrude
 reassure
 rise
 secure
 slouch
 soothe
 splash
 warm
 watch
 weave
 whisper

Examples of Effective Phrases

The flickering candlelight made the paintings dance...

...imposing and noble, the fortress protected...

...the cavernous great hall was adorned with rich tapestries...

The turrets protruded through the clouds, like soldiers...

...decrepit and aged, the drawbridge creaked unsteadily...



Descriptive Settings: Forests and Woodland

What Can I Describe?

bark
berries
birds
brambles
branches
deer
fallen leaves
ferns
foxes
ground
insects
ivy
mice
moss
pine cones
spiders
squirrels
thickets
trees
trunks
undergrowth

How Can I Describe It?

abundant
chirping
creaking
damp
decaying
earthy
fallen
gloomy
humming
impenetrable
peaceful
rotting
rough
serene
shady
silent
stagnant
sun-dappled
tangled
tranquil
whistling

What Can It Do?

bend
creep
govern
groan
jut
perch
protrude
rise
rustle
scamper
scrabble
scramble
scurry
settle
shuffle
slouch
stumble
sway
twist
weave
whisper

Examples of Effective Phrases

The rustling leaves sang a soothing melody...

...sun-dappled secrets being uncovered...

...scampered and scurried through a labyrinth of roots and fallen foliage...

The haunting shadows of branches danced across the floor...

...holding its majestic crown of leaves high...

