



Academic Year 2025-26

'Welcome to Winwick - Parental Information'

Tuesday 17th June 2025



*'In God's love, aspire and achieve to be the best'
- Corinthians 16:14 'Do everything in Love'*





AGENDA

Welcome & Meet the Team

Church School - Our Values & Expectations

Rewards & Consequences

EYFS Curriculum

Assessment, Progress & Support

Resources

Important Information About School

Communication

Getting Ready for September

Transition in July/September

Questions



*'In God's love, aspire and achieve to be the best'
- Corinthians 16:14 'Do everything in Love'*





Meet the Team



Mrs Jackie Neal

Chair of Governors



Mr Nicholls

Deputy Headteacher &
EYFS/KS1 Lead



Mrs Duckett

Headteacher



Mrs Mather

Assistant Headteacher,
SENDCo & KS2 Lead



Miss Platt

Reception



Miss Ovington

Teaching Assistant



Mrs Mills

Mental Health and
Wellbeing Lead



Mrs O'Brien

Business Manager



Mrs Rees

Clerical Assistant



Mr Burgess

Site Manager



*'In God's love, aspire and achieve to be the best'
- Corinthians 16:14 'Do everything in Love'*





Our Governing Body

Jackie Neal

(Chair of Governors)

Amy Lacey

(Foundation Governor and Governor for Early Years)

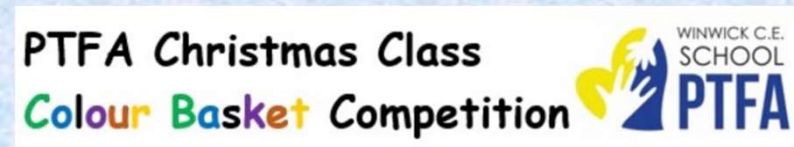


*'In God's love, aspire and achieve to be the best'
- Corinthians 16:14 'Do everything in Love'*





PTFA & Parent Board



*'In God's love, aspire and achieve to be the best'
- Corinthians 16:14 'Do everything in Love'*





Welcome to Winwick



What it means to be a Church School...



*'In God's love, aspire and achieve to be the best'
- Corinthians 16:14 'Do everything in Love'*





In God's love, aspire and achieve to be the best'
1 Corinthians 16:14 'Do everything in love.'

LOVE - RESPECT - PERSEVERANCE



Courage Friendship Forgiveness Trust Thankfulness Respect Responsibility

Our Core Christian Values



Love – with the love of God and the love of one another.



Respect – to respect all things and the world we live in.



Perseverance – to keep going and support each other in all things.



In our school we show the values of...

RESPECT: we listen to everyone equally

COURAGE: we work hard and challenge ourselves

FRIENDSHIP: we are kind and look after each other

FORGIVENESS: we forgive each other and ourselves

TRUTH: we are honest and tell the truth

GENEROSITY: we look after our community and the wider world

TRUST & HOPE: we put our trust and hope in Jesus and the example He has set



Expectations



- Winwick CE Primary School have high expectations for all members of our Winwick Family.
- As a Church school, we expect all members of our school community to support our Christian and Core School Values.
- Winwick CE Primary School have a Home-School Agreement and range of School Policies which all stakeholders are expected to follow. All of these documents can be found on our school website.
- All relevant documentation and policies can be found on our school website.
<https://winwick.eschools.co.uk/website>
- Specific parental overviews for each class can also be found on your child's class page on the school website. These are also sent out in the first week of each half term.



*'In God's love, aspire and achieve to be the best'
- Corinthians 16:14 'Do everything in Love'*





Expectations



- All children should behave in a way that reflects the school values and rules in addition to following these and their class charters.
- Children will work hard and always try their best.
- Reading at Home – MINIMUM of 4 times per week.
- Parents/Carers to sign reading records.
- Parents/Carers to ensure their children arrive at school promptly for the start of the school day.
- Parents/Carers to access Arbor as a means of receiving communication from school.
- Parents/Carers to raise any concerns directly with school so we can work together to resolve them.



*'In God's love, aspire and achieve to be the best'
– Corinthians 16:14 'Do everything in Love'*





Rewards



*'In God's love, aspire and achieve to be the best'
- Corinthians 16:14 'Do everything in Love'*





What happens when we make the wrong choice?



Consequences may vary depending on the situation. They can include:

- Being spoken to by a member of staff
- Spoken to by the Key Stage Lead, Deputy Headteacher, Assistant Headteacher and/or Headteacher
- Miss set number of minutes of break/lunch times
- Work sent home to finish
- Contact Parents/Carers

Where more serious incidents occur, consequences may include;

- Alternative arrangements for break time/lunch time
- Working at a workstation within/outside of the classroom

All staff follow the school's behaviour policy.

Behaviour Curriculum.

*'In God's love, aspire and achieve to be the best'
- Corinthians 16:14 'Do everything in Love'*





EYFS Curriculum



*'In God's love, aspire and achieve to be the best'
- Corinthians 16:14 'Do everything in Love'*





EYFS Curriculum



Characteristics of Effective Learning

Playing and Exploring

ENGAGEMENT

Finding out and exploring
Playing with what they know
Being willing to 'have a go'

Active Learning

MOTIVATION

Being involved and concentrating
Keep trying
Enjoying achieving what they set out to do

Creative and Critical Thinking

THINKING

Having their own ideas
Making links
Working with ideas

Areas of Learning and Development

Birth to 5 Matters Aspects

Prime Areas

Personal, Social and Emotional Development

Making Relationships

Sense of Self

Understanding Feelings

Physical Development

Moving and handling

Health and Self-care

Communication and Language

Listening and Attention

Understanding

Speaking

Specific Areas

Literacy

Reading

Writing

Mathematics

Mathematics

Understanding the World

People and Communities

The World

Technology

Expressive Arts and Design

Creating with Materials

Being Imaginative and Expressive



*'In God's love, aspire and achieve to be the best'
- Corinthians 16:14 'Do everything in Love'*





Religious Education Curriculum & Worship

School follows the Questful RE syllabus for our Religious Education. Please see the full offer, coverage and information about half termly value focus areas on the school website.

Worship

- Classes will all take part in a daily act of worship, which is invitational.
- We will encourage the children to become involved with worships and will have 'worship teams' across the year.
- Our Worships will be led by various people including Mrs Duckett and other members of the staff team, Rev. Trevor, Rev. Martin and members of our local Clergy/church, as well as the children themselves.



*'In God's love, aspire and achieve to be the best'
- Corinthians 16:14 'Do everything in Love'*





How do we assess your child's progress?



How do we assess your child's progress?

- NFER Baseline Assessment
- Teacher Baseline Assessment
- Ongoing teacher assessment throughout the year
- Observations
- Phonics Checks
- Development Matters Framework:
 - Birth to 3
 - 3&4 Year Olds
 - Reception
 - Early Learning Goals
- Moderating our judgements: External moderation with EY2P – (External Consultants) & moderation with other Warrington schools.



*'In God's love, aspire and achieve to be the best'
– Corinthians 16:14 'Do everything in Love'*





What resources will school provide?



- All stationary required to complete their work (e.g. pencils, pens, pencil crayons, rulers, etc)
- Reading Record & Reading Book (Should be brought into school EVERY DAY. Please ensure you record your child's reading in their Reading Record)
- Homework Books

DO NOT SEND IN PENCIL CASES OR RESOURCES

- Your child does not need to have their own pencil case/resources as school will provide all resources needed for your child.
- If your child brings a pencil case in, they will be asked to leave it in their bag and take it home with them.
- This prevents items getting lost or broken.



*'In God's love, aspire and achieve to be the best'
- Corinthians 16:14 'Do everything in Love'*





What resources do I need to provide for my child?



UNIFORM & PE KITS

Children should come into school each day with clean uniform, as well as a suitable, waterproof coat. Also, please send in spare underwear and socks in a labelled bag that can be kept in the classroom.

ON DESIGNATED PE DAYS, CHILDREN ARE TO COME TO SCHOOL ALREADY DRESSED IN THEIR PE KITS. *(PE days will be on the parental overview which will be shared in September).*

PE Kit –

- PE t-shirt (white or one with school logo)
- Shorts (Plain – Blue)
- Tracksuit bottoms (Plain, Black or Blue)
- Trainers

PE Kits can be purchased through Touchline along with other items of school uniform. Alternatively, they can be bought from other places, e.g. local supermarkets. Children **MUST** wear the designated PE Kit and **MUST NOT** come into school in other items, e.g. brightly coloured leggings/football kits.

Please ensure all of your child's belongings are clearly labelled with their name.



*'In God's love, aspire and achieve to be the best'
– Corinthians 16:14 'Do everything in Love'*





What resources do I need to provide for my child?



What resources do I need to provide for my child?

- **Suitable, waterproof coat / Sun Hat** (if weather is hot).
- Waterproof and wellies that can be left in school.
- Children are to come to school in their **school uniform and normal black shoes**.
- **Labelled water bottle** that should be prefilled before arriving in school (clear with a sports cap – WATER ONLY).
- **Lunch box** if your child is not having a Universal Free School Meal (Reception & Key Stage 1) or is a Key Stage 2 child who is in receipt of Free School Meals.
- **Book bag**; this should contain your child's reading record/reading book and homework books. NO other bags to be brought to school. Please ensure your child's bag has an identifiable key ring attached so that it is easy for your child to recognise it.

Please ensure all of your child's belongings are clearly labelled with their name.



*'In God's love, aspire and achieve to be the best'
– Corinthians 16:14 'Do everything in Love'*





What if my child needs additional support?



Targeted Intervention & Support, where appropriate:

- Quality First Teaching & Adaptive Learning in class.
- Target groups/1:1 support
- Phonics/Spelling Interventions
- Guided Maths/Writing Support
- Nurture Groups / Mental Health & Wellbeing Lead
- Additional Individual Reading
- Personalised targeted support linked to child's needs/recommendations from external reports (SEND children)
- Referrals for external advice/support if needed

If you have any concerns, please email us and we will give you a call.

If you need to make an appointment with our SENDCo/Assistant Head, please contact the school office to make an appointment with Mrs Mather.



*'In God's love, aspire and achieve to be the best'
- Corinthians 16:14 'Do everything in Love'*





Attendance



- We are striving for 100% attendance for your child
- We work on a 'First Day Response'
- Please contact the school office each day via email to inform us if your child will be absent
- Holidays will be classed as unauthorised absence
- Punctuality is monitored very closely – children need to enter school at their designated time. If they arrive after this time, they are classed as late. Learning starts the second your child enters the classroom so it is essential that they are in school on time.
- More information about our Attendance Policy can be found on the school website.



*'In God's love, aspire and achieve to be the best'
– Corinthians 16:14 'Do everything in Love'*





Attendance



Punctuality means...

Students should be in their classrooms on time every day



WARRINGTON
Borough Council



Every school day counts BUT every minute is equally important!

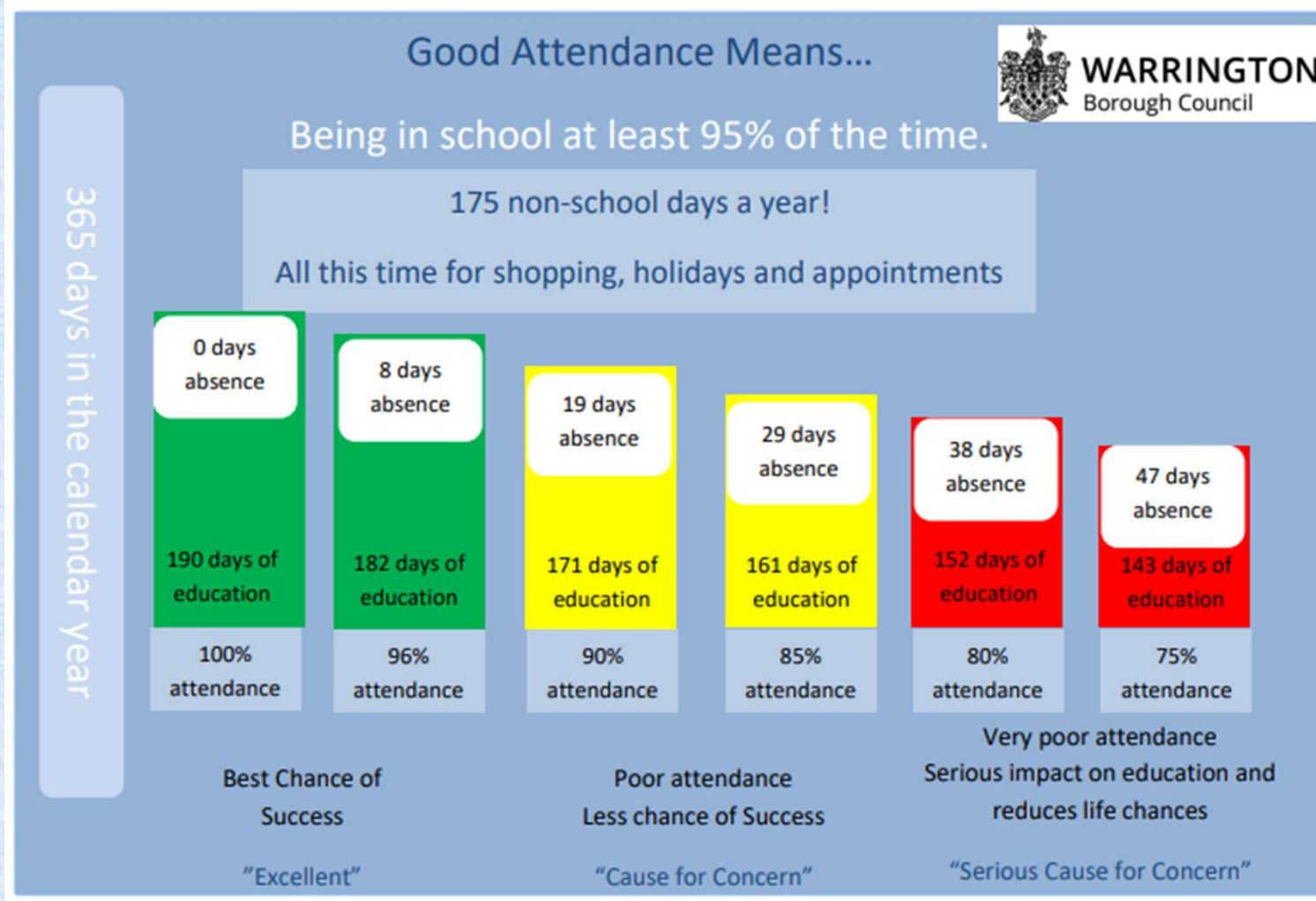


*'In God's love, aspire and achieve to be the best'
- Corinthians 16:14 'Do everything in Love'*





Attendance



*'In God's love, aspire and achieve to be the best'
- Corinthians 16:14 'Do everything in Love'*





Drop-offs/Pick-Ups



- For drop-off/pick-up, we use a filtering system into/out of school via the school playground. The one-way system is in place with adults dropping off the children, entering via the playground gate closest to The Swan and then the adult leaving via the gate closest to the school building.
- Children enter the building themselves; our Reception children have their own drop-off point at the outer door at the Reception classroom.
- The gates on the school playground will be open from **8.45am-8.55am** for drop-offs in the morning.
- The gates at the school playground will be open at the end of the day for pick-ups from **3.15pm (KS1), with KS2 finishing at 3.20pm.**
- When picking children up, please be mindful not to block access to the gates if you are waiting.
- For safeguarding purposes, it is really important that staff can see who is collecting children. Pick-up time at the end of the day can be busy; we thank you for your patience when waiting for your child to be dismissed by school staff.
- As they get older, if your child walks to/from school by themselves, permission for them to do so must be emailed to school – this includes if you wish them to leave the playground by themselves and meet you elsewhere.



*'In God's love, aspire and achieve to be the best'
– Corinthians 16:14 'Do everything in Love'*





Transport and Parking



Parents/carers are encouraged to walk their child/children to and from school.

For the safety of all children and adults, we restrict access on the side road to the Leisure Centre during the hours of drop off and pick up. This road will be closed off, with no access to vehicles, between the times of:

8.30-9.05am and 3.00pm- 3.20pm

(NB. Times may vary slightly where required – see sign on the gate for full closing times, however we will not usually need to close them for this long.)

We would advise walking, or using the car park by The Swan or at the Church.

A reminder that we are **not allowed** to use the car park at the Premier Inn at any time and you **MUST NOT** use the fence at the Premier Inn as a cut through.

Please be respectful of our neighbours and the need for access to their driveways during these times.



*'In God's love, aspire and achieve to be the best'
– Corinthians 16:14 'Do everything in Love'*





LINK CLUB: Breakfast Club / After-school Club



If you require the use of our Link Club before or after school, you can find further details on our school website about opening/closing times and costs.

Please liaise with the school office for further information; bookings will continue to be via ParentPay.

You can find out more information about Link Club by visiting our school website.

We also offer a wider range of after school club activities. These will be shared with you via Arbor and on the school website; clubs can be booked via Parent Pay (Arbor).

Currently reviewing our provision – further details will follow.



*'In God's love, aspire and achieve to be the best'
– Corinthians 16:14 'Do everything in Love'*





COMMUNICATION:



Where can I find out information about school?

- School Website – www.winwick.eschools.co.uk
- Weekly Newsletters (website/Arbor)
- School Office: 01925 630995

All Parents/Carers MUST sign-up to receive information via the Arbor – the app can be download for free and there is also a link to the Arbor website on our school website.

Our class teachers and members of the Senior Leadership Team will be happy to meet with you if you need to discuss your child. Please email the school office to make an appointment at a mutually convenient time.



*'In God's love, aspire and achieve to be the best'
– Corinthians 16:14 'Do everything in Love'*





How can I prepare my child for starting school?



Getting Ready for **School**

It is nearly time to start school! Here are some things you can practise at home to help you get ready for school.

Self-Care and Independence

- I can wash and dry my hands.
- I can wipe my nose.
- I can put on/fasten my coat and shoes.
- I can use the toilet.
- I am learning to dress/undress – this will help me change for PE.
- I am happy to be away from my parents or carers. I know they will be back soon.

Playing with Others



- I join in games and activities with other people.
- I can share and take turns.

Speaking and Listening

- I can talk about my ideas, needs and feelings.
- I can ask a grown-up for help.
- I can follow simple instructions.



*'In God's love, aspire and achieve to be the best'
– Corinthians 16:14 'Do everything in Love'*





How can I prepare my child for starting school?



Eating & Drinking

- I can use a spoon, knife and fork.
- I can open my lunch box as well as wrappers and packaging.
- I can drink from a water bottle, carton or open cup.



1 2 3 4 5 Numbers

- I can count a small number of items.
- I like singing number rhymes or songs.
- I am learning to say numbers to ten.
- I can recognise some numbers.

Reading and Writing

- I can recognise/read my name.
- I can hold a pencil to draw.
- I am learning to write my name.
- I enjoy listening to stories and rhymes.



*'In God's love, aspire and achieve to be the best'
- Corinthians 16:14 'Do everything in Love'*



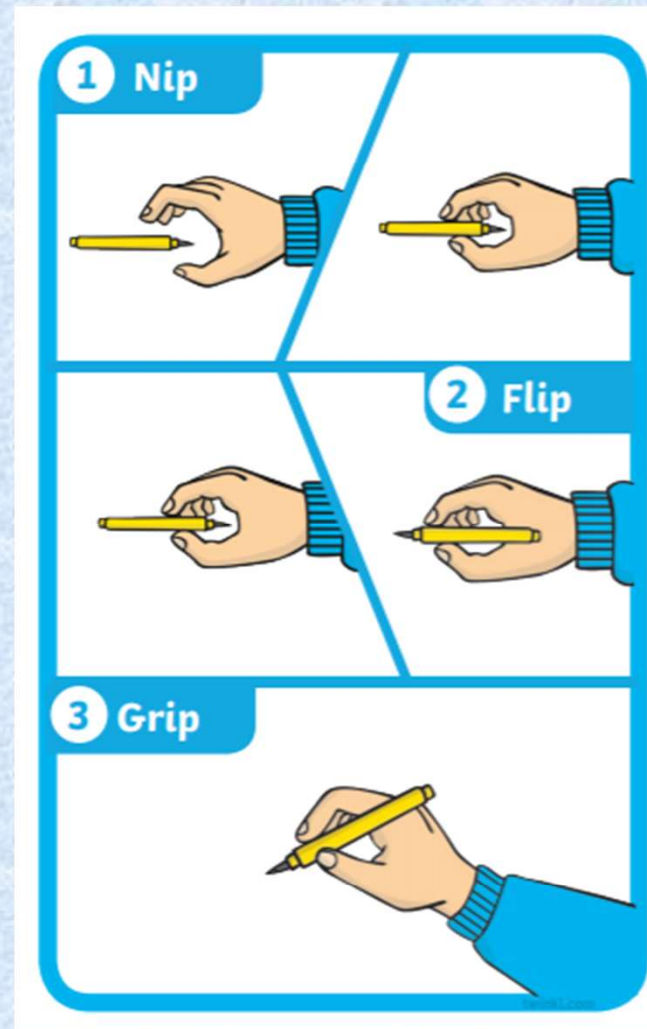


How can I prepare my child for starting school?



HOLDING A PENCIL:

In class, we teach the children to hold a pencil using Nip, flip and grip. You could practice this at home.



*'In God's love, aspire and achieve to be the best'
- Corinthians 16:14 'Do everything in Love'*



Steps to starting school

Build your child's confidence so that they start school confident, curious and ready to learn

Access more great advice, tips and downloadable resources at pacey.org.uk/schoolready



More top tips:

- ★ Get your child ready for their new routine by switching their meal times to match those of the school day
- ★ Encourage your child to explore new environments and interact with new people
- ★ Talk to your child about what they are most looking forward to at school
- ★ Let your child practise putting their new school uniform on and taking it off
- ★ **And remember,** every child is different and starts school with different abilities



What happens next?



*'In God's love, aspire and achieve to be the best'
- Corinthians 16:14 'Do everything in Love'*





Transition from Nursery to Reception



Pre-September

- **June/July** - Discussions with nurseries to find out more about your child.
- **w/c 23rd June / w/c 30th June** – Home Visits (Optional)
- **Thursday 3rd and Friday 4th July 9:30am - 11:30am – Transition Week** - Morning school taster sessions in school. Children to be dropped off and collected from the school main entrance. Afternoon home visits for new families joining Winwick. Miss Platt will be making an appointment with you, if this is required.

Additional Transition Opportunities:

- **Monday 30th June, 9.15am-9.45am – Stay and Play Welcome Session** (Optional)
- **Tuesday 8th July, 9.15am-9.45am – Teddy Bear Picnic Stay and Play** – (Optional) bring a teddy
- **Tuesday 15th July, 9.15am-9.45am – Stay and Play Session** (Optional)
-



*'In God's love, aspire and achieve to be the best'
– Corinthians 16:14 'Do everything in Love'*





Transition from Nursery to Reception



September 2025

Phased return to school to support them, and us, getting to know your child better. Please support your child to ensure they can be as independent as possible when they come to school in September: putting their own coat on, using a knife and fork, going to the toilet themselves.

Wednesday 3rd September & Thursday 4th September

All children to attend school for the AM session (8:45-11:30am)

Drop off will be at the Reception Door on the playground and pick up will be via the Main School entrance at the front of the school. Pupils are to bring book bags and a water bottle with them each day. Snacks will be provided.

Friday 5th September – all pupils in school from 8:45am – 1pm.

Drop off will be at the Reception Door on the playground and pick up will be via the Main School entrance at the front of the school. The children will remain in school for their lunch altogether and will be collected after lunch, (lunch and snacks will be provided by school meals). Please see lunch menu to discuss lunch choices with your child – this will be shared with you earlier in the week.

Monday 8th September – all pupils in school full time, normal hours – 8.45am-3.15pm



*'In God's love, aspire and achieve to be the best'
– Corinthians 16:14 'Do everything in Love'*





Welcome to Our Winwick Family!



*'In God's love, aspire and achieve to be the best'
- Corinthians 16:14 'Do everything in Love'*





Any Questions?



*'In God's love, aspire and achieve to be the best'
- Corinthians 16:14 'Do everything in Love'*

