

Winwick CE Primary School



Prospectus

Myddleton Lane, Winwick, Warrington,
WA2 8LQ

Telephone: 01925 630995

Email address: winwick_primary@sch.warrington.gov.uk

Website address: <https://winwick.eschools.co.uk>

Welcome to Winwick CE Primary School



May I offer you a warm welcome to our school. Our main aim for the children who come to Winwick CE Primary School is for them 'In God's love, to aspire and achieve to be the best'.

We provide a high quality of education and care for our children that helps them begin to reach their full potential and prepares them for the next stages in their education and for their future lives.

We develop an enthusiasm for learning through fun and engaging experiences which include everyone.

Mrs S Dymond

Headteacher



'In God's love , aspire and achieve to be the best'

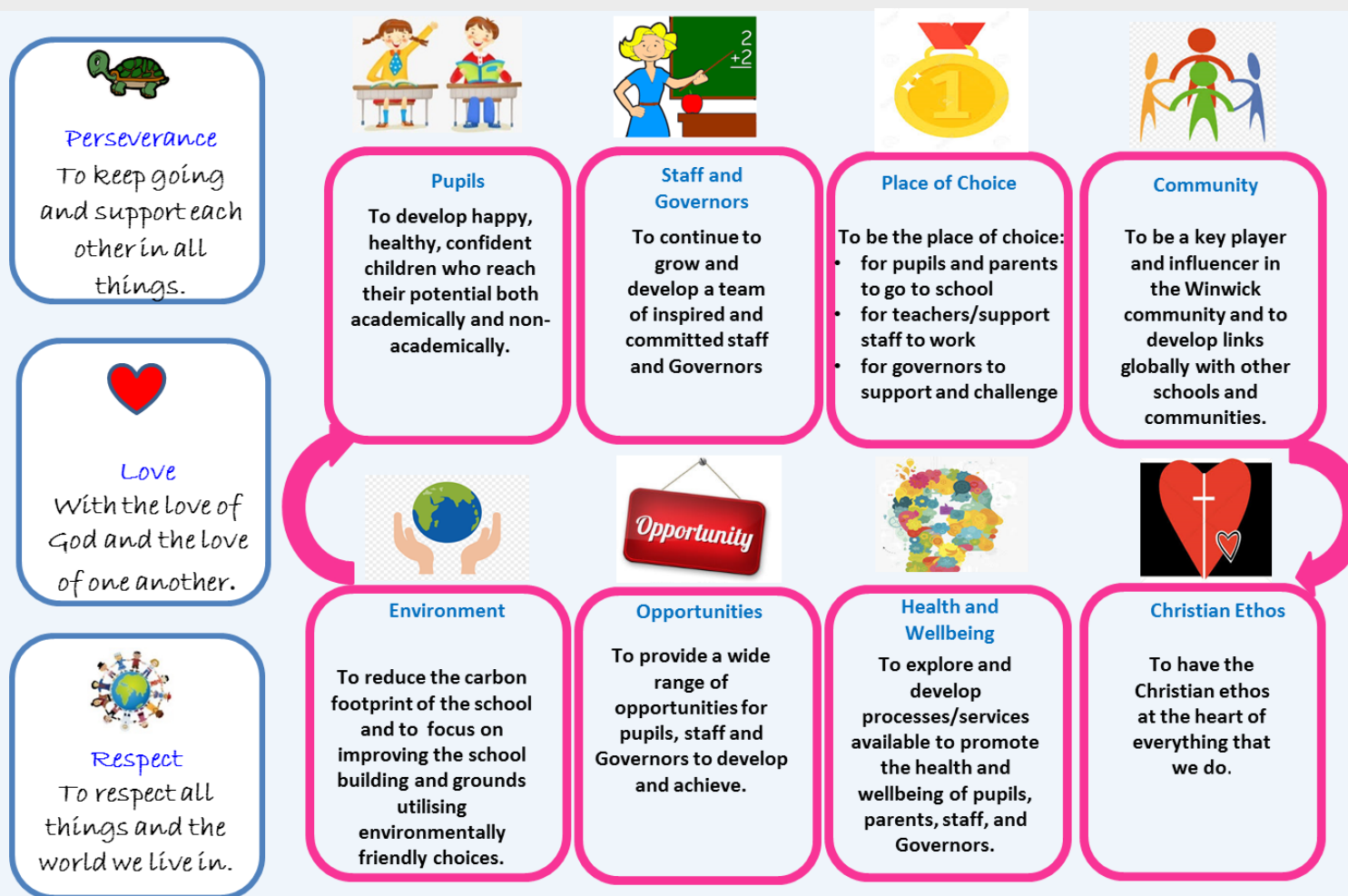
We want to work with all stakeholders in helping our children enrich their lives academically, spiritually and socially. Winwick serves children from the school year in which they are five years old, up to age eleven. The school has a pupil roll of 198, organised into one class per year group.

As a Church School, we have close links with St Oswald's Church. We reflect Christian values in the everyday life of the school. We are very proud of our school and warmly welcome anyone wishing to visit us to see the exciting learning experiences we offer, meet our fantastic children and dedicated staff team.

Anyone wishing to arrange a visit can do so by contacting Mrs Elin Rees in the school office.

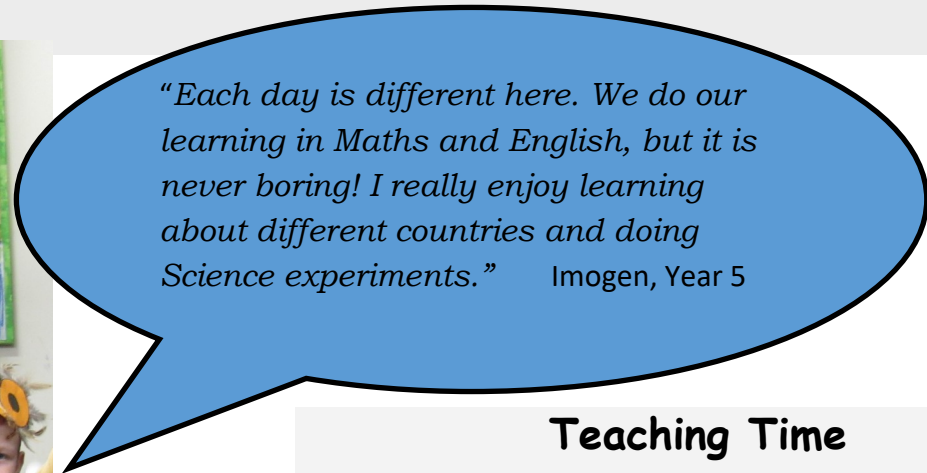


Our Vision



The Governing Body is responsible for the strategic direction of the school, with the Headteacher and Senior Leadership Team responsible for the day to day running of the school. The Chair of Governors is Jackie Neal. All our Governors can be seen on our school website, or can be contacted via the school office. All parents are eligible to stand for election as a Parent Governors. Vacancies would appear on the website.

A Day in the life of Winwick



"Each day is different here. We do our learning in Maths and English, but it is never boring! I really enjoy learning about different countries and doing Science experiments." Imogen, Year 5

Teaching Time

The school operates a five day teaching week and is set out as follows:

Reception and Key Stage 1

8.50-11.45/ 12.45-3.15

Morning break: 15minutes

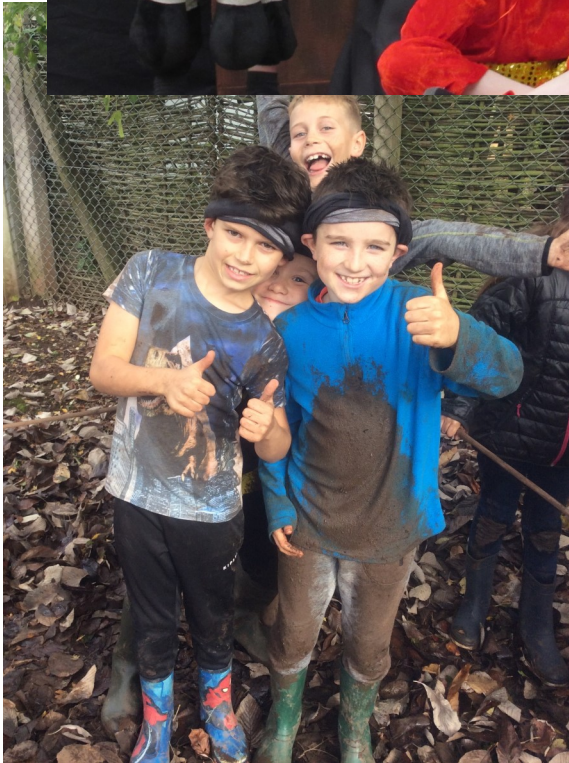
Afternoon break: 15minutes

Key Stage 2

8.50-12.15/1.00-3.20

Morning Break: 15minutes

No afternoon break





Breakfast and After School club create an ideal environment for learning before and after school. Your children will have the opportunity to interact with one another, make new friends, and engage in crafts and other types of structured play. We have a diverse selection of snacks, foods and refreshments for your children to choose from. At After School Club, we also encourage children to engage with reading, drawing, and colouring activities, to stimulate their creative magic. When its nice outside, we visit the park and participate in outdoor sport and physical activity. If children have been set homework, we also provide open support and guidance in how to complete it. We have extended our hours to open at 7.30am and close at 5.50pm in response to parents needs.

We give our best, to ensure your child receives the best.

"Winwick Wildcats is so nice and caring. They are fun, cool and always there to help. We get delicious food everyday for Breakfast and Dinner." Evie Year 6

Admissions



The Local Authority co-ordinates all admissions to Warrington schools. This enables parents to identify up to three schools, placing them in order of preference and giving reasons for their choice.

Parents must make their application online or on a paper form which can be requested from the Local Authority. Accurate dates for submissions should be found on the Warrington Local Authority website.

As a Church School, we have a slightly different admissions criteria which means that additional information can be submitted in support of an application. Attendance at St Oswald's, or another local Church, will be taken in account. Please see our school website for the specific Admissions Criteria for Winwick CE.

<https://www.warrington.gov.uk/schooladmissions>

Our Early Year Curriculum

"We cannot believe how well our child has settled into school. We are already very much part of the life of the school and part of the Winwick family."

Parent of Reception pupil

Early Learning Goals

Personal, Social and Emotional Development - Your child will learn to be how to self-regulate their emotions, begin to develop their confidence, show independence resilience in the face of a challenge. They will also begin to build relationships, playing cooperatively and taking turns with others.

Communication and Language - Your child will learn to talk confidently and clearly, enjoying stories, songs and poems, hearing and saying sounds. They will begin to express their ideas and feelings including using past, present and future tenses.

Literacy - Your child will begin to develop their literacy skills including comprehension, word reading and writing. They will listen to a range of stories and be introduced to a range of vocabulary through poetry, rhymes, fiction and non-fiction texts.

Mathematics - Your child will develop an understanding of maths through stories, songs, games and imaginative play. They will become comfortable with numbers in practical activities, involving adding, subtracting and sharing. They will also understand ideas such as 'heavier than' or 'bigger than' when dealing with concepts involving shape, space and measuring. In addition, they will also begin to develop their Numerical Pattern finding skills, comparing and counting numbers to 10 and 20.

Knowledge and understanding of the world - Your child will learn about the past and present including their own. They will explore and find out about the world around them including different people, cultures and beliefs. They will also begin to learn about the Natural world including ani-

Physical development - Your child will learn to move confidently, controlling their body and handling equipment by developing their fine and gross motor skills.

Expressive Arts and Design - Your child will be taught to use their senses as they explore colours and shapes in art and design. They will experience music making and dance, as well as story telling and role play. They will create using a range of materials whilst developing and expressing their own imaginations.



Our Learning & Curriculum

We teach a broad and balanced curriculum that recognises the multi-cultural society we live in, our core British Values and retains our own Christian beliefs.

The school works within the framework of the Early Years and National Curriculum.

English, Mathematics, Science, Art, Design, Music, PE, Geography, History, RE, PSHE, Computing and RSE are all covered throughout the curriculum to support your child's creative, physical, social and academic development.

The school adopts a personalised learning approach, putting children at the centre of their own learning. All documents relating to our curriculum appear on the school website where you will find overviews of coverage, progression of skills and all policy documents.

Alternatively, please contact the office if you require a paper copy.



SEND, Inclusion & Support



'We cannot thank you enough as a school for ensuring that our son had the best possible start to their education. You made sure he could stay in a mainstream setting and get the very best opportunities possible.'

Parent of previous Year 6 pupil

Our SEND Provision is high quality based entirely upon inclusion. We are here to ensure that every child reaches their full potential and will work together as equal partners with parents and external agencies. At Winwick CE, we embrace the fact that every child is unique, and aim that the needs of all our children are met so that they can be the very best they can.

The School SEND Report utilises the LA Local Offer to meet the needs of SEND pupils as determined by school policy, and the provision the school is able to meet. We ensure that Winwick is wholly inclusive and all children are given equal opportunities to learn and take part in things outside of school like sporting tournaments, Residential and clubs.

If you wishes to speak to anyone regarding additional needs, our school SENDCO is Mrs Mather.

Wider Opportunities



"We like going on Residential visits because we get to spend time with our friends and the teachers. During our time away, we make new memories and go on epic adventures."

Jess and Ruby, Year 6

We are proud of the range of opportunities we offer our children whether through educational trips to local museums, art galleries or nature parks, to their contributions in the community through singing, performing or acts of kindness.

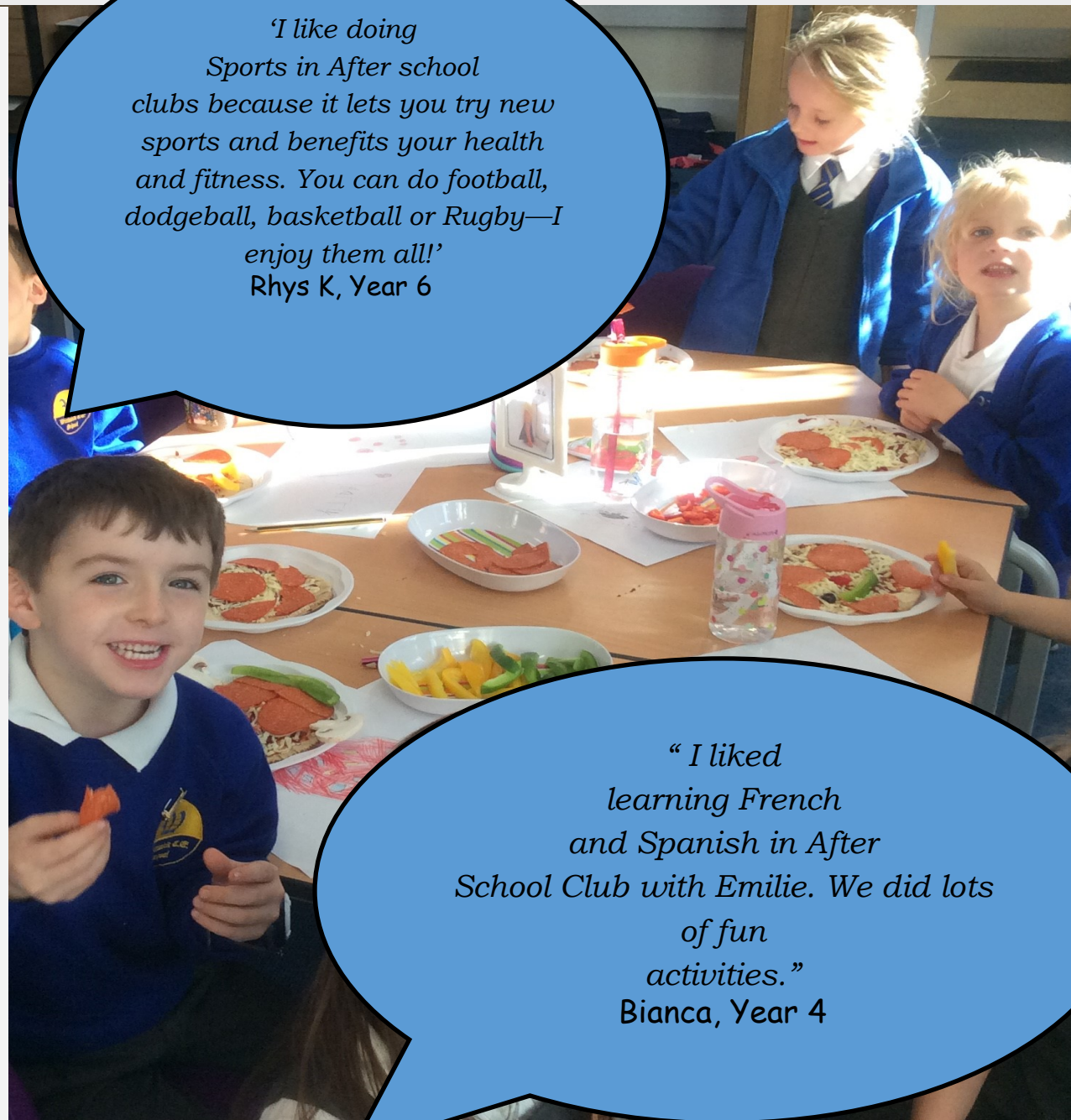
We also offer our children the chance to go away on Residential visits during their time with us. Year 2 enjoy a one night residential to Crosby. Year 4 are all given the opportunity to go away for two nights, and our Year 6 attend the Conway Centre for two nights.

We also invite visitors into our school as well as taking our children to visit different places of worship.

Sport and Clubs

The school possesses excellent PE facilities and the subject is viewed as an essential part of every child's education. The Parish playing field is spacious and means that we are able to offer the children a wide range of games and athletic activities. Visiting coaches and our Sports Coach, Mr Perrin, take classes in football, gymnastics, rugby league and many more sports during the year. Children in Years 3&4 receive swimming instruction at our nearby pool. The children are able to participate in a wide range of extra-curricular activities which are run by our Sports Coach, Mr Perrin, WSA (Warrington Sports Partnership) and skilled members of staff. We also run a range of non-sporting after school clubs. This year we are offering Science, IT, Art, Cookery, Choir, Ukulele and many more.

The children love the range of clubs on offer and our participation rates are high.



*'I like doing
Sports in After school
clubs because it lets you try new
sports and benefits your health
and fitness. You can do football,
dodgeball, basketball or Rugby—I
enjoy them all!'
Rhys K, Year 6*

*"I liked
learning French
and Spanish in After
School Club with Emilie. We did lots
of fun
activities."
Bianca, Year 4*

Our Values & Behaviour

We believe that every child can behave well and our pupils do so ever day. Our positive behaviour system is based upon our shared values as a Church of England Primary School. It is our primary aim that every member of our community feels valued and respected and that each person is treated fairly. Our rules apply at all times, in all parts of the school, and at all times of the school day. These are also values we would expect our children to show when representing our school or out in the community.

- **RESPECT:** we listen to everyone equally
- **COURAGE:** we work hard and challenge ourselves
- **FRIENDSHIP:** we are kind and look after each other
- **FORGIVENESS:** we forgive each other and ourselves
- **TRUTH:** we are honest and tell the truth
- **GENEROSITY:** we look after our community and the wider world
- **TRUST & HOPE:** we put our trust and hope in Jesus and the example He has set

Children receive praise and rewards for demonstrating and following our School Values.



Collective Worship

Day	Leader
Monday 2.45pm-3.15pm	Whole school worship led by a Senior Leader
Tuesday 9.40am-10am	Whole school Worship led by Open The Book Visitors
Wednesday	KS2 Whole school worship led by KS2 teachers on a rotation KS1 Whole school worship led by KS1 teachers on a rotation
Thursday (this is done at an appropriate moment in the school day for each class)	Class worship led by class teacher
Friday 9am-9.30am	Celebration collective worship led by Headteacher



In our Church school, the daily Act of Collective Worship is an important part of the school day, when the whole school joins together for a period of prayer and reflection. Children are given the opportunity to plan and deliver some parts of the collective worship. Although our emphasis is on Christianity, we learn about, and from, other world religions.

Our collective worship sessions are also sometimes linked to our PSHE themes. We stress the similarities between religions and the importance of accepting and respecting other's differences.

Wider Community

Christmas Fair...come and meet Father Christmas?



BINGO NIGHT: 'two little ducks; a baker's dozen...'



The Community

Winwick CE Primary School seeks to make a positive contribution to the local and wider community. Children are encouraged to help those less fortunate than themselves by supporting charities, such as the Jeans for Genes, Marie Curie and the Foodbank. The school council choose the three main charities for the year in September and the whole school community are notified of these. We also support an international charity link as we feel we have a Global responsibility to make an impact on the world we live in.

Parents and Friends Association

The school has a very active PTFA. All parents are automatically members and are encouraged to take an active role in its activities. A variety of events take place, including a Christmas Fair, discos and various events through the year. All profits are donated to the school and used to benefit the children.