



**Academic Year 2023-24**

# **'Welcome to Winwick - Parental Information'**

**Thursday 22<sup>nd</sup> June 2023**

*'In God's love, aspire and achieve to be the best'  
- Corinthians 16:14 'Do everything in Love'*





## **AGENDA**

**Welcome & Meet the Team**

**Church School -Our Values & Expectations**

**Transition in July/September**

**Rewards & Consequences**

**EYFS Curriculum & Home Learning**

**Assessment, Progress & Support**

**Resources**

**Important Information About School**

**Communication**

**Getting Ready for September**

**Questions**



***'In God's love, aspire and achieve to be the best'  
- Corinthians 16:14 'Do everything in Love'***





## Meet the Team



**Mrs Jackie Neal**  
Chair of Governors



**Mrs Duckett**  
Headteacher



**Mr Henaghan**  
Acting Deputy  
Headteacher - EYFS/KS1  
Lead



**Mrs Mather**  
SENDCo & Year 6



**Miss Platt**  
Reception



**Miss Oakley**  
Teaching Assistant



**Miss Ovington**  
Teaching Assistant



**Mrs Mills**  
Mental Health and  
Wellbeing Lead



**Mrs Heaton**  
Business Manager



**Mrs Rees**  
Clerical Assistant



**Mr Burgess**  
Site Manager



*'In God's love, aspire and achieve to be the best'  
- Corinthians 16:14 'Do everything in Love'*







# Welcome to Winwick



## What it means to be a Church School...



*'In God's love, aspire and achieve to be the best'  
- Corinthians 16:14 'Do everything in Love'*



## Our Core Christian Values



**Love – with the love of God and the love of one another.** Love is the foundation of all values and as such will be taught through everything we do. We will encourage all our children to love God, themselves, love one another and love the world they are a part of. We will teach our children that God will always love them and be there for them in the good times as well as the difficult times in their lives.



**Respect – to respect all things and the world we live in.** The nature of God, as revealed in the Bible, presents all people with a choice. Those whose response is one of respect are acknowledging God's greatness, authority and involvement in the world. This extends to respect for the created order, including humanity made in the image of God. We will encourage all our children to respect themselves, each other, their school, their community and the wider world which God has made. We will give children the opportunities to be social champions to ensure our world is a place where we respect our differences no matter what faith, culture or race, what sexual orientation we may be, whether we have a disability or what gender we are. We are all born equal in God's eyes.



**Perseverance – to keep going and support each other in all things.** Jesus frequently encouraged his disciples to 'endure patiently' the difficulties and obstacles they encountered and to persevere in the face of adversity. He trusted God even when his enemies tried to stop his work and plotted his death.

We will encourage our children to persevere in all they do; if work is challenging they are to keep trying and never give up. We will ensure our children challenge themselves to achieve in all aspects of their learning. We will encourage and support them to believe that if there needs to be a change in this world; they are to persevere and recognise that one voice can begin to make a difference.





## **In our school we show the values of...**

**RESPECT:** we listen to everyone equally

**COURAGE:** we work hard and challenge ourselves

**FRIENDSHIP:** we are kind and look after each other

**FORGIVENESS:** we forgive each other and ourselves

**TRUTH:** we are honest and tell the truth

**GENEROSITY:** we look after our community and the wider world

**TRUST & HOPE:** we put our trust and hope in Jesus and the example He has set



# Religious Education Curriculum & Worship



School follows the Questful RE syllabus for our Religious Education. Please see the full offer, coverage and information about half termly value focus areas on the school website.

## Worship

- Classes will all take part in a daily act of worship, which is invitational.
- We will encourage the children to become involved with worships and will have 'worship teams' across the year.
- Our Worships will be led by various people including Mrs Duckett and other members of the staff team, members of our local Clergy/church, as well as the children themselves.



*'In God's love, aspire and achieve to be the best'  
- Corinthians 16:14 'Do everything in Love'*







# Expectations



- Winwick CE Primary School have high expectations for all members of our Winwick Family.
- As a Church school, we expect all members of our school community to follow and display our Christian and Core School Values.
- Winwick CE Primary School have a Home-School Agreement and range of School Policies which all stakeholders are expected to follow. All of these documents can be found on our school website.
- All relevant documentation and policies can be found on our school website.  
<https://winwick.eschools.co.uk/website>
- Specific parental overviews for each class can also be found on your child's class page on the school website. These are also sent out in the first week of each half term.



*'In God's love, aspire and achieve to be the best'*  
*- Corinthians 16:14 'Do everything in Love'*







# Expectations



- All children should behave in a way that reflects the school values and rules in addition to following these and their class charters.
- Children will work hard and always try their best.
- Reading at Home – MINIMUM of 4 times per week.
- Parents/Carers to sign reading records.
- Parents/Carers to ensure their children arrive at school promptly for the start of the school day.
- Parents/Carers to access School PING as a means of receiving communication from school.



*'In God's love, aspire and achieve to be the best'  
- Corinthians 16:14 'Do everything in Love'*





# Transition from Nursery to Reception



## Pre-September

- June and July - Discussions with nurseries to find out more about your child.
- Monday 3<sup>rd</sup> & Tuesday 4<sup>th</sup> July - Possible home visits for new families joining Winwick. Miss Platt will be making an appointment with you.
- Wednesday 5<sup>th</sup> July, Thursday 6<sup>th</sup> July & Friday 7<sup>th</sup> July – School taster sessions. Children to be dropped off and collected from school main entrance. **SESSION TIMES: AM 9:30 – 11:30am PM 1:00 – 3:00pm**

**Children born between 1<sup>st</sup> September and 31<sup>st</sup> March to attend Wednesday 5<sup>th</sup> July AM and Thursday 6<sup>th</sup> July PM  
AM 9:30 – 11:30am / PM 1:00 – 3:00pm**

**Children born between 1<sup>st</sup> April and 31<sup>st</sup> August to attend – Wednesday 5<sup>th</sup> July PM and Friday 7<sup>th</sup> July AM  
AM 9:30 – 11:30am / PM 1:00 – 3:00pm**

## Additional Transition Opportunities:

- **Thursday 14<sup>th</sup> July 9.15am – 10am** Teddy Bear's Picnic - Join us on the parish field for a Teddy Bear's picnic where you and your child will be able to meet the other new families joining us in September. Don't forget to bring your Teddy and a blanket. (This will be in the school hall if there is poor weather!)
- Additional Stay and Play session:

**9.00-10.00 AM Friday 21<sup>st</sup> July**



*'In God's love, aspire and achieve to be the best'  
- Corinthians 16:14 'Do everything in Love'*







# Transition from Nursery to Reception



## September 2023

Phased return to school to support them, and us, getting to know your child better. Please support your child to ensure they can be as independent as possible when they come to school in September: putting their own coat on, using a knife and fork, going to the toilet themselves.

**Wednesday 6<sup>th</sup> September & Thursday 7<sup>th</sup> September**  
**All children to attend school for the AM session (8:45-11:45pm)**

Drop off will be at the Reception Door on the playground and pick up will be via the Main School entrance at the front of the school. Pupils are to bring book bags and water bottle with them each day. Snack will be provided.

**Friday 8<sup>th</sup> September – all pupils in school from 8:45am – 1.15pm.**

Drop off will be at the Reception Door on the playground and pick up will be via the Main School entrance at the front of the school. The children will remain in school for their lunch altogether and be collected after lunch, (lunch and snack will be provided by school meals).

**Monday 11<sup>th</sup> September – all pupils in school full time, normal hours; see drop off and pick up times later in this document.**

*'In God's love, aspire and achieve to be the best'*  
*- Corinthians 16:14 'Do everything in Love'*





# Transition from Nursery to Reception



## September 2023

**Phased return to school to support them, and us, getting to know your child better. Please support your child to ensure they can be as independent as possible when they come to school in September: putting their own coat on, using a knife and fork, going to the toilet themselves.**

## Wednesday 6<sup>th</sup> September & Thursday 7<sup>th</sup> September

**All children to attend school for the AM session (8:45-11:45pm)**

**Drop off will be at the Reception Door and pick up will be via the Main School Pupils are to bring book bags and water bottle with them each day. Snack will be provided.**

**Friday 8<sup>th</sup> September – all pupils in school from 8:45am – 1.15pm. Drop off and pick up via the Reception door. They will remain in school for their lunch altogether (lunch and snack will be provided by school meals).**

**Monday 11<sup>th</sup> September – all pupils in school full time, normal hours; see drop off and pick up times later in this document.**



***'In God's love, aspire and achieve to be the best'  
- Corinthians 16:14 'Do everything in Love'***





## Rewards

### HOUSE POINTS & MERIT CERTIFICATES:

- Awarded for good work.
- House Points can be awarded at any time.
- One Merit Certificate is given per class each week.

### DOJOS & VALUES CERTIFICATES:

- Awarded for demonstrating our values and for positive behaviour.
- Dojos can be awarded at any time.
- One Values Certificate is given per class per week.



## HEADTEACHER, SPORTS and READING AWARDS:

- **Sports/Reading:** Usually only child per class is chosen each week.
- **Headteacher:** Can be awarded at any time for 'going the extra mile'. Given out at Celebration Worship.
- Can link to Values and/or work completed in school, at home or in the community.







# Values Passports



**Pupils in every year group are given a Value Passport linked to the our Core Values of Love, Respect and Perseverance. Over the course of the academic year, pupils are encouraged to complete the activities set within the passport but can also add their own activities they do as well. The passports are age appropriate with an EYFS, Key Stage 1 and Key Stage 2 version.**

**Periodically during the year we will request that these are brought into school to be checked and celebrated.**

**At the end of the academic year, badges which children can add to their uniform will be given out in a celebration assembly. One pupil from the school will also be chosen as our Value Champion and awarded the yearly trophy.**



*'In God's love, aspire and achieve to be the best'  
- Corinthians 16:14 'Do everything in Love'*





# Whole Class Awards



## WEEKLY READING TROPHY:

Trophy will be given weekly based on Individual Home Reading/Reading Plus/Reading Eggs data and information for whole classes.

## WEEKLY FRENCH AWARD:

One class will be chosen in KS2 each week to receive the French Award.

## WEEKLY ATTENDANCE AWARD:

The class with the highest attendance that week will win the Attendance Award. Individual attendance certificates are presented at the end of each term to those children who have gained 100% over the term.

WEEKLY DOJO WINNERS: Winning House each half term wins a non-uniform day.

WEEKLY HOUSE POINT WINNERS: Winning House each half term wins a non-uniform day.



*'In God's love, aspire and achieve to be the best'  
- Corinthians 16:14 'Do everything in Love'*





## Termly Class Rewards



- The class work hard each half term to collect a set number of stars.
- At the beginning of each half term, the class and teacher decide what award they will work towards.
- If the class achieve their star target, they will win the reward.
- The number of stars to achieve decreases each half term, with the stars becoming more difficult to achieve but the reward becomes more significant (e.g. 15 minutes extra playtime each day for a week up to a special event day).
- Each classroom has the same rewards display and the same total of stars that need to be achieved each half term.



*'In God's love, aspire and achieve to be the best'  
- Corinthians 16:14 'Do everything in Love'*







# What happens when we make the wrong choice?



Consequences may vary depending on the situation. They can include:

- Being spoken to by a member of staff
- Spoken to by the Key Stage Lead, Deputy Headteacher and/or Headteacher
- Miss set number of minutes of break/lunch times
- Work sent home to finish
- Parents/Carers PINGED or spoken to.

Where more serious incidents occur, consequences may include;

- Alternative arrangements for break time/lunch time
- Working at a workstation within/outside of the classroom

*All staff follow the school's behaviour policy; PLEASE NOTE - this is currently being reviewed ready for September 2023 and will be shared at the beginning of next academic year.*



*'In God's love, aspire and achieve to be the best'  
- Corinthians 16:14 'Do everything in Love'*







## EYFS Curriculum



*'In God's love, aspire and achieve to be the best'*  
*- Corinthians 16:14 'Do everything in Love'*





## Characteristics of Effective Learning

### Playing and Exploring

#### ENGAGEMENT

Finding out and exploring  
Playing with what they know  
Being willing to 'have a go'

### Active Learning

#### MOTIVATION

Being involved and concentrating  
Keep trying  
Enjoying achieving what they set out to do

### Creative and Critical Thinking

#### THINKING

Having their own ideas  
Making links  
Working with ideas

## Areas of Learning and Development

## Birth to 5 Matters Aspects

### Prime Areas

Personal, Social and Emotional Development	Making Relationships
	Sense of Self
	Understanding Feelings
Physical Development	Moving and handling
	Health and Self-care
Communication and Language	Listening and Attention
	Understanding
	Speaking

### Specific Areas

Literacy	Reading
	Writing
Mathematics	Mathematics
Understanding the World	People and Communities
	The World
	Technology
Expressive Arts and Design	Creating with Materials
	Being Imaginative and Expressive





# Home Learning: Homework



- To help develop strong educational links between school and home we use Parent Share and Google Classroom.
- Homework set via Google Classroom and submitted via Evidence Me
- Reading x4 times a week – range of reading
- Numeracy/English Activity
- Optional extras
- Share home learning on Evidence Me!



*'In God's love, aspire and achieve to be the best'  
- Corinthians 16:14 'Do everything in Love'*





# How do we assess your child's progress?



## How do we assess your child's progress?

- **NFER Baseline Assessment**
- **Teacher Baseline Assessment**
- **Ongoing teacher assessment throughout the year**
- **Observations**
- **Phonics Checks**
- **Development Matters Framework:**
  - Birth to 3
  - 3&4 Year Olds
  - Reception
  - Early Learning Goals
- **Moderating our judgements: External moderation with EY2P – (External Consultants) & moderation with other Warrington schools.**



*'In God's love, aspire and achieve to be the best'*  
*- Corinthians 16:14 'Do everything in Love'*





## What resources will school provide?



- All stationary required to complete their work (e.g. pencils, pens, pencil crayons, rulers, etc)
- Reading Record & Reading Book (Should be brought into school EVERY DAY. Please ensure you record your child's reading in their Reading Record)
- Homework Books

### DO NOT SEND IN PENCIL CASES OR RESOURCES

- Your child does not need to have their own pencil case/resources as school will provide all resources needed for your child.
- If your child brings a pencil case in, they will be asked to leave it in their bag and take it home with them.
- This prevents items getting lost or broken.



*'In God's love, aspire and achieve to be the best'  
- Corinthians 16:14 'Do everything in Love'*







# What resources do I need to provide for my child?



## UNIFORM & PE KITS

Children should come into school each day with clean uniform, as well as a suitable, waterproof coat.

Please send in spare underwear and socks that can be kept in their tray.

**ON DESIGNATED PE DAYS, CHILDREN ARE TO COME TO SCHOOL ALREADY DRESSED IN THEIR PE KITS.**

*(PE days will be on the parental overview which will be shared in September).*

- **PE Kit –**
  - PE t-shirt (white or one with school logo)
  - Shorts (Plain – Blue)
  - Tracksuit bottoms (Plain, Black or Blue)
  - Trainers
- PE Kits can be purchased through Touchline along with other items of school uniform. Please see the school website for more details.
- Children **MUST** wear the designated PE Kit and **MUST NOT** come into school in other items, e.g. brightly coloured leggings/football kits.

*Please ensure all of your child's belongings are clearly labelled with their name.*



*'In God's love, aspire and achieve to be the best'  
- Corinthians 16:14 'Do everything in Love'*





# What resources do I need to provide for my child?



## What resources do I need to provide for my child?

- **Suitable, waterproof coat / Sun Hat (if weather is hot).**
- **Waterproof and wellies that can be left in school.**
- **Children are to come to school in their school uniform and normal black shoes.**
- **Labelled water bottle that should be prefilled before arriving in school (clear with a sports cap – WATER ONLY).**
- **Lunch box if your child is not having a Universal Free School Meal (Reception & Key Stage 1) or is a Key Stage 2 child who is in receipt of Free School Meals.**
- **Book bag; this should contain your child's reading record/reading book, homework books. NO other bags to be brought to school. Please ensure your child's bag has an identifiable key ring attached.**

*Please ensure all of your child's belongings are clearly labelled with their name.*



*'In God's love, aspire and achieve to be the best'  
- Corinthians 16:14 'Do everything in Love'*





# What if my child needs additional support?



## **Targeted Intervention & Support, where appropriate:**

- **Quality First Teaching & Differentiation in class (Adaptive Learning)**
- **Target groups/1:1 support**
- **Phonics/Spelling Interventions**
- **Guided Maths/Writing Support**
- **Phonics/Spelling Intervention**
- **Nurture Groups / Mental Health & Wellbeing Lead**
- **Additional Individual Reading**
- **Personalised targeted support linked to child's needs/recommendations from external reports (SEND children)**
- **Referrals for external advice/support if needed**

**If you have any concerns, please email us and we will give you a call.**

**If you need to make an appointment with our SENDCo, please contact the school office to make an appointment with Mrs Mather.**

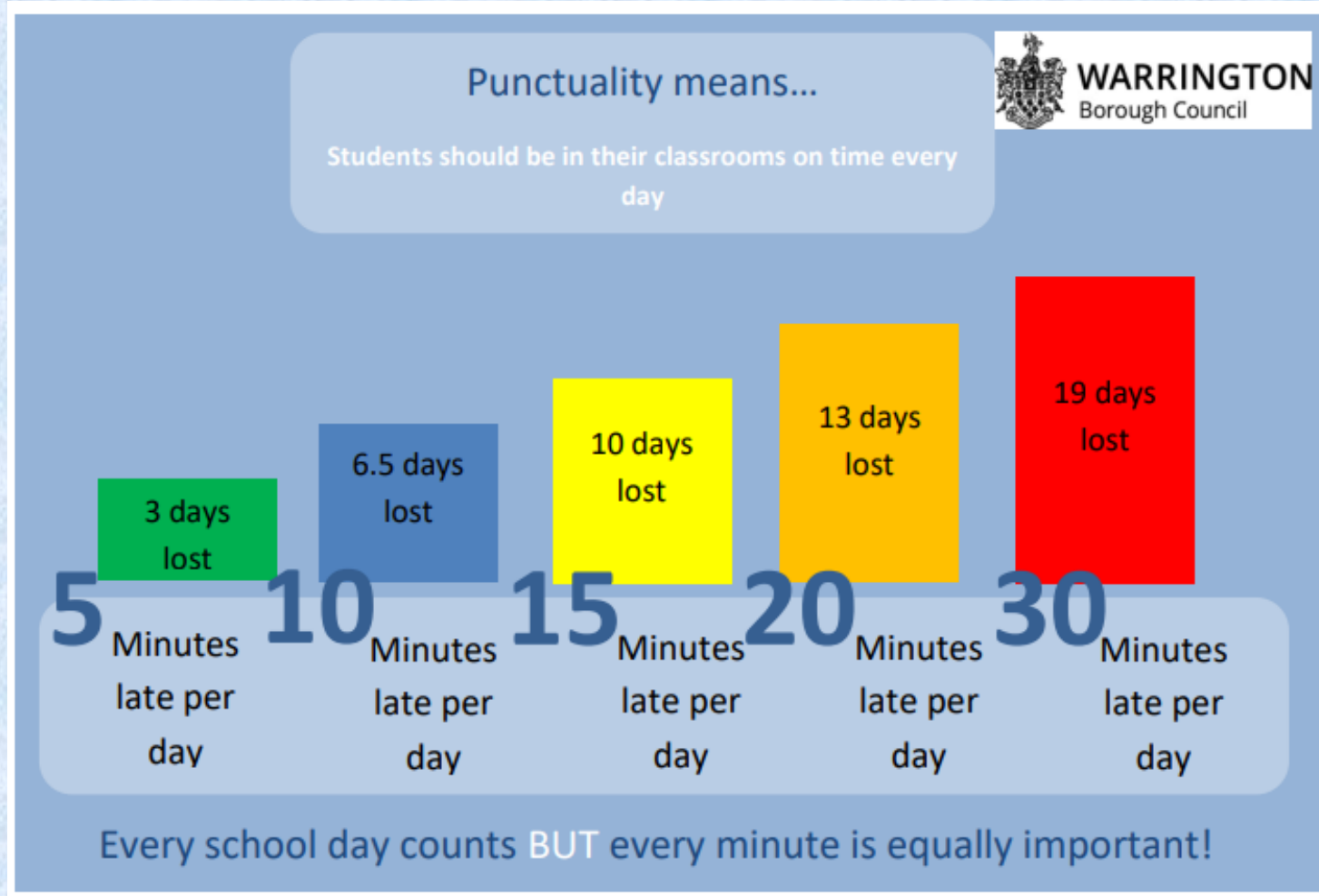


***'In God's love, aspire and achieve to be the best'  
- Corinthians 16:14 'Do everything in Love'***

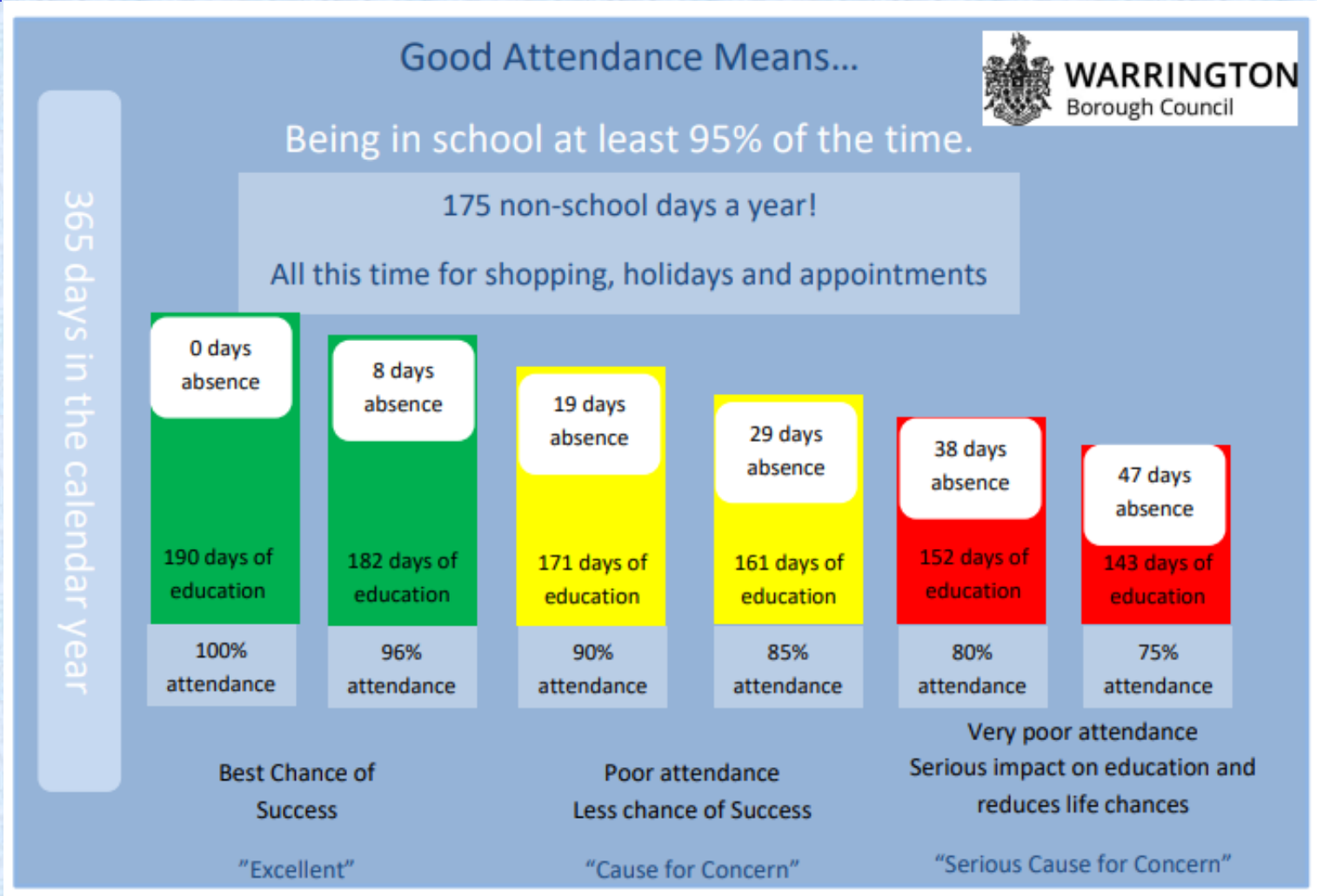




# Attendance



# Attendance





# Attendance



- We are striving for 100% attendance for your child
- We work on a 'First Day Response'
- Please contact the school office each day via email to inform us if your child will be absent
- Holidays will be classed as unauthorised absence
- Punctuality is monitored very closely – children need to enter school at their designated time. If they arrive after this time, they are classed as late. Learning starts the second your child enters the classroom so it is essential that they are in school on time.
- More information about our Attendance Policy can be found on the school website.



*'In God's love, aspire and achieve to be the best'*  
*- Corinthians 16:14 'Do everything in Love'*







## Drop-offs/Pick-Ups



- For drop-off/pick-up, we use a filtering system into/out of school via the school playground. The one-way system is in place with adults dropping off the children, entering via the playground gate closest to The Swan and then the adult leaving via the gate closest to the school building.
- Children enter the building themselves; our Reception children have their own drop-off point at the outer door at the Reception classroom.
- The gates on the school playground will be open from 8.45am-8.55am for drop-offs in the morning.
- The gates at the school playground will be open at the end of the day for pick-ups from 3.15pm (KS1), with KS2 finishing at 3.20pm.
- When picking children up, please be mindful not to block access to the gates if you are waiting.
- For safeguarding purposes, it is really important that staff can see who is collecting children. Pick-up time at the end of the day can be busy; we thank you for your patience when waiting for your child to be dismissed by school staff.
- As they get older, if your child walks to/from school by themselves, permission for them to do so must be emailed to school – this includes if you wish them to leave the playground by themselves and meet you elsewhere.



*'In God's love, aspire and achieve to be the best'*  
*- Corinthians 16:14 'Do everything in Love'*





# Transport and Parking



**Parents/carers are encouraged to walk their child/children to and from school.**

**For the safety of all children and adults, we restrict access on the side road to the Leisure Centre during the hours of drop off and pick up. This road will be closed off, with no access to vehicles, between the times of:**

**8.30-9.05am and 3.00pm- 3.20pm**

***(NB. Times may vary slightly where required – see sign on the gate for full closing times, however we will not usually need to close them for this long.)***

**We would advise walking, or using the car park by The Swan or at the Church.**

**A reminder that we are not allowed to use the car park at the Premier Inn at any time and you MUST NOT use the fence at the Premier Inn as a cut through.**

**Please be respectful of our neighbours and the need for access to their driveways during these times.**



***'In God's love, aspire and achieve to be the best'  
- Corinthians 16:14 'Do everything in Love'***





## LINK CLUB: Breakfast Club / After-school Club



If you require the use of our Link Club before or after school, you can find further details on our school website about opening/closing times and costs.

Please liaise with the school office for further information; bookings will continue to be via ParentPay.

You can find out more information about Link Club by visiting our school website...

[https://winwick.eschools.co.uk/website/link\\_club/420109](https://winwick.eschools.co.uk/website/link_club/420109)

We also offer a wider range of after school club activities. Each half term, the timetable for these will be shared with you via School PING and on the school website; clubs can be booked via Parent Pay.

[https://winwick.eschools.co.uk/website/extra\\_curricular\\_activities/420212](https://winwick.eschools.co.uk/website/extra_curricular_activities/420212)



*'In God's love, aspire and achieve to be the best'*  
*- Corinthians 16:14 'Do everything in Love'*





# How can I prepare my child for starting school?

## Getting Ready for **School**

It is nearly time to start school! Here are some things you can practise at home to help you get ready for school.

### Self-Care and Independence

- I can wash and dry my hands.
- I can wipe my nose.
- I can put on/fasten my coat and shoes.
- I can use the toilet.
- I am learning to dress/undress – this will help me change for PE.
- I am happy to be away from my parents or carers. I know they will be back soon.

### Playing with Others



- I join in games and activities with other people.
- I can share and take turns.

### Speaking and Listening

- I can talk about my ideas, needs and feelings.
- I can ask a grown-up for help.
- I can follow simple instructions.

# How can I prepare my child for starting school?

## Eating & Drinking

- I can use a spoon, knife and fork.
- I can open my lunch box as well as wrappers and packaging.
- I can drink from a water bottle, carton or open cup.



## 1 2 3 4 5 Numbers

- I can count a small number of items.
- I like singing number rhymes or songs.
- I am learning to say numbers to ten.
- I can recognise some numbers.

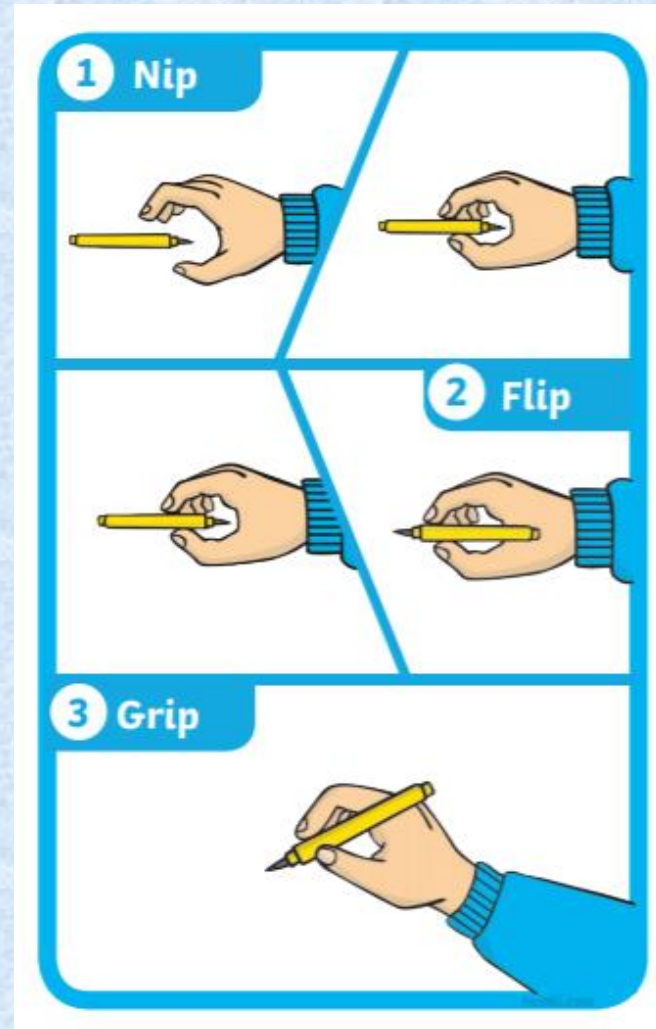
## Reading and Writing

- I can recognise/read my name.
- I can hold a pencil to draw.
- I am learning to write my name.
- I enjoy listening to stories and rhymes.

# How can I prepare my child for starting school?

## HOLDING A PENCIL:

In class, we teach the children to hold A pencil using Nip, flip and grip. You could practice this at home.

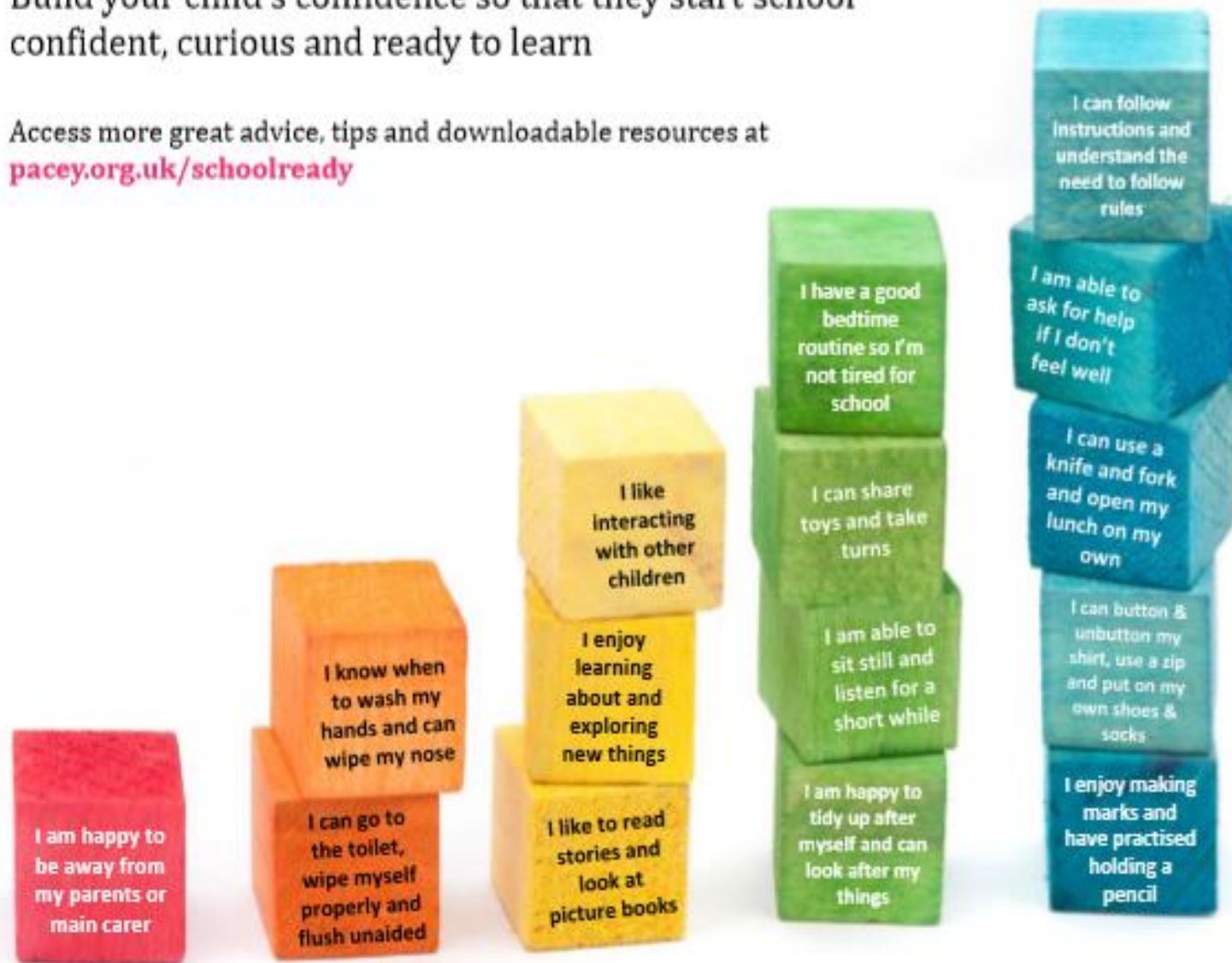




# Steps to starting school

Build your child's confidence so that they start school confident, curious and ready to learn

Access more great advice, tips and downloadable resources at [pacey.org.uk/schoolready](https://pacey.org.uk/schoolready)



## More top tips:

- ★ Get your child ready for their new routine by switching their meal times to match those of the school day
- ★ Encourage your child to explore new environments and interact with new people
- ★ Talk to your child about what they are most looking forward to at school
- ★ Let your child practise putting their new school uniform on and taking it off
- ★ And remember, every child is different and starts school with different abilities



## COMMUNICATION:



### Where can I find out information about school?

- **School Website – [www.winwick.eschools.co.uk](http://www.winwick.eschools.co.uk)**
- **Weekly Newsletters (website/PING)**
- **School Office: 01925 630995**

**All Parents/Carers MUST sign-up to receive information via the School PING – the app can be download for free and there is also a link to the School PING website on our school website.**

***Our class teachers and members of the Senior Leadership Team will be happy to meet with you if you need to discuss your child. Please email the school office to make an appointment at a mutually convenient time.***



***'In God's love, aspire and achieve to be the best'  
- Corinthians 16:14 'Do everything in Love'***





# Any Questions?



*'In God's love, aspire and achieve to be the best'  
- Corinthians 16:14 'Do everything in Love'*

